



SXM SERIES

FEATURES

- Type “SMA” Female Connectors
- Good Power Handling Capability
- Designed for MIL-E-5400 Class II

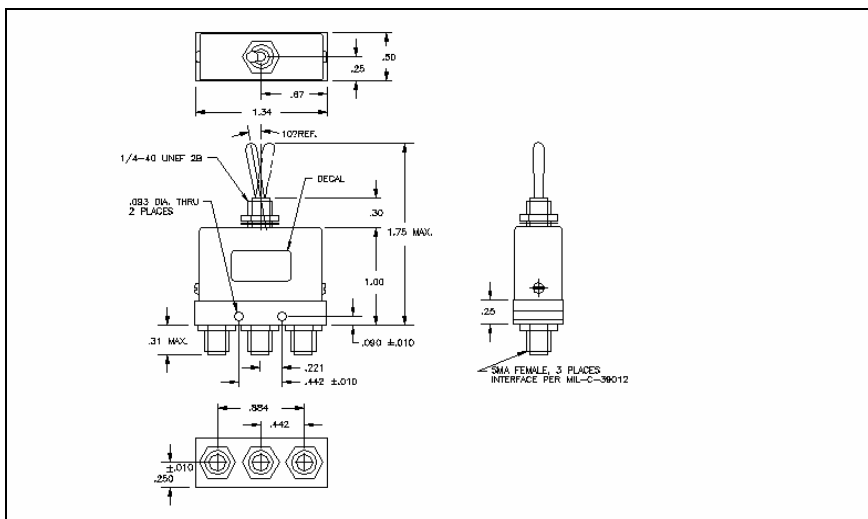
SPECIFICATIONS

Frequency Range (GHz)	VSWR (max) @ (GHz)	Insertion Loss (max) (dB) @ (GHz)	Isolation, (min) (dB)	Peak Power (kW)	Average Power Watts @ 1 GHz ¹	Minimum Actuation Life	Nominal Weight (ounces)
DC – 18	1.20:1, DC-4 1.25:1, 4-8 1.40:1, 8-12.4 1.50:1, 12.4-18	0.3, DC-7 0.4, 7-12.4 0.5, 12.4-18	60	1	200	100K	1

NOTES

1. Refer to Power Derating Curves for rating other frequencies.

OUTLINE DRAWING



MISCELLANEOUS:

1. Sage Laboratories Inc. “Standard Warranty and Order Terms and Conditions” apply to all orders.
2. All specifications subject to change without notice.
3. Check “Ordering and Availability Listing” for delivery and ordering information.
4. Contact our local Manufacturers Representative for pricing.

Specification Revision - 102704

