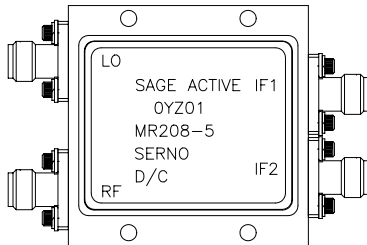




**SPECIFICATION BULLETIN MR208-5 MIXER (QIFM)**  
**RF/LO: 14 to 18 GHz RF DC to 100 MHz IF**

**FEATURES:**

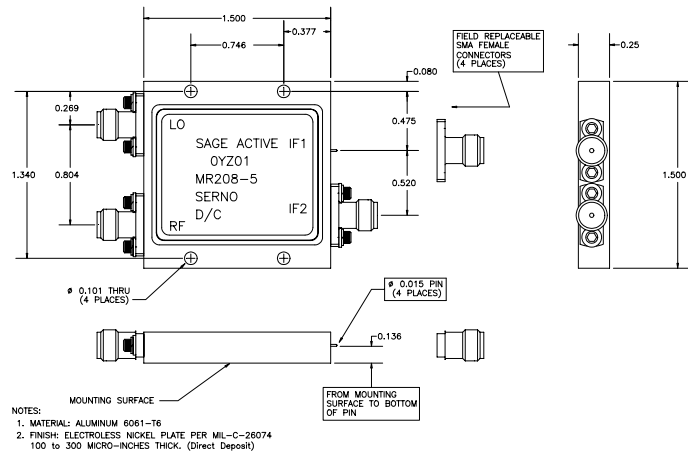


- Field Replacable SMA Connectors
- Suitable for Stripline Integration
- Quadrature Phase  $\pm 5^\circ$  Typical
- Amplitude Balance  $\pm .6$  dB Typical
- VSWR's 1.5:1 Typical
- Available as a hermetic product

SPECIFICATIONS	TYPICAL	Min.	Max.
RF/LO Frequency Range	---	14 GHz	18 GHz
IF Frequency Range (3 dB Bandwidth)	---	DC	100 MHz
Conversion Loss	11 dB	---	13 dB
Quadrature Phase Balance	$\pm 5^\circ$	---	$\pm 15^\circ$
Amplitude Balance	$\pm .6$ dB	---	$\pm 1.5$ dB
DC Offset	$\pm 4$ mV	---	$\pm 15$ mV
LO Drive Level	13 dBm	12 dBm	14 dBm
Isolation, LO to RF	30 dB	20 dB	---
LO to IF	22 dB	15 dB	---
VSWR, RF	2.2:1	---	2.5:1
LO	1.4:1	---	2.0:1
Input 1 dB Compression (Input)	6 dBm	2 dBm	---
Input Two-Tone Third Order IP ) IP3	13 dBm	10 dBm	---
Operating Temperature Range (°C)	---	-40	+85
Storage Temperature Range (°C)	---	-65	+125

Detail Outline Drawing Information: Sage Active Microwave Drawing # 11208

**OUTLINE DRAWING:**



**Sage Laboratories, Inc.**

**8 Executive Drive • Hudson, NH 03051-4902 • Phone: 603-459-1600 • Fax: 603-459-1605**

**WEB SITE: [www.sagelabs.com](http://www.sagelabs.com)**