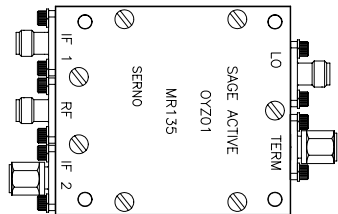




SPECIFICATION MR135 IMAGE REJECTION MIXER
BULLETIN RF/LO: 7.75 - 18.25 GHz IF: 2.75 to 3.25 GHz

Standard Product Features:

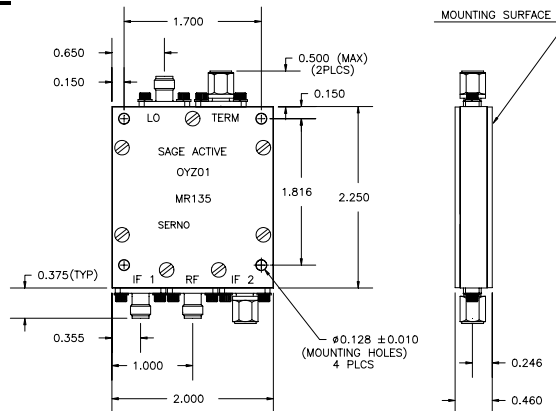
- Broadband RF Coverage
- Microwave IF Coverage
- Triple Balance Mixers
- 6.5 dB Typical Conversion Loss
- 35 dB Typical Isolation
- Field Replaceable SMA Connectors
- Environmentally Sealed Package



Specifications	Typical	Min.	Max.
RF Frequency Range	----	7.75 GHz	18.25 GHz
LO Frequency Range		10.0 GHz	16.0 GHz
IF Frequency Range	----	2.75 GHz	3.25 GHz
Conversion Loss	6.5 dB	----	8.5 dB
Image Rejection	30 dB	15 dB	----
LO Drive Level	14 dBm	12 dBm	16 dBm
Isolation, LO to RF	35 dB	25 dB	---
LO to IF	40 dB	25 dB	---
VSWR, RF	2.0:1	---	2.8:1
LO	1.5:1	---	2.2:1
IF	1.2:1		2.2:1
Input 1 dB Compression (Input) (Note 1)	11 dBm	9.0 dBm	---
Input Two-Tone Third Order IP (IP3) (Note 1)	21 dBm	19 dBm	---
Operating Temperature Range	---	-20 C	+70 C
Storage Temperature Range	---	-65 C	+125 C

Note 1: LO Power level = 16 dBm

OUTLINE DRAWING:



Sage Laboratories, Inc.

8 Executive Drive • Hudson, NH 03051 • Phone: 603-459-1600 • Fax: 603-459-1605

WEB SITE: www.sagelabs.com